

How To: Install an HS Family Interface for DTS V8 (USB only)

Requirements

- Diagnostic Tool Set with a version of at least 8.06.021 or newer
- samtec D-PDU API setup 4.1.22.0
- HS Family interface (HSX, HSX-S, HSC)
- Windows 7
- Administration rights for your computer

Prepare your HS interface Hardware

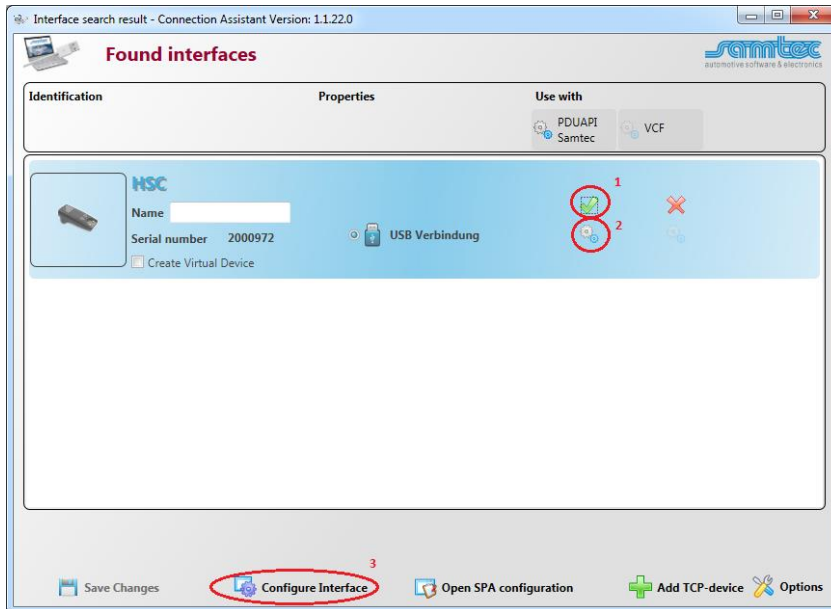
If you use the OBD cable to connect your HS interface to the vehicle busses, it will also be power-supplied by the vehicle. When you want to use the HS interface with a breakout box, you should power the interface over the connectors +Ubat and GND of the breakout box. Connect the CAN Bus of your test setup to the CAN sockets of the breakout box. Unless your DTS project specifies other CAN connection pins use the CAN1 sockets. Make sure your bus is terminated correctly. Check the polarity of the CAN lines, when connecting them to your CAN bus.

Install the Hardware Driver

Before connecting the HS interface via USB to your computer, please install the samtec D-PDU API software from the CD. Make sure the HS interface is not connected to your computer yet. Start the SetupSamtec_D-PDU_API_<Version>.exe installation program. You need administration rights to execute the driver installation successfully. On Windows 7 confirm any UAC requests. After the Setup was finished, power the interface and connect it to a USB port of your computer. Let Windows install the drivers for the device.

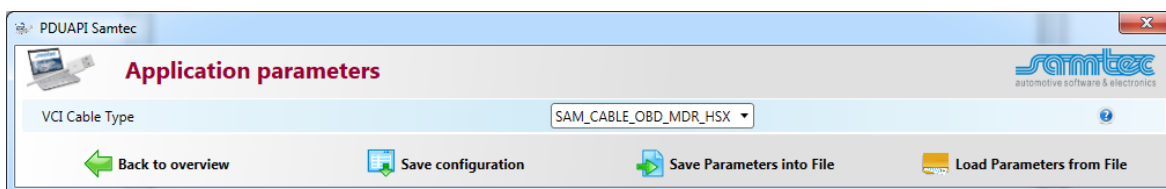
Device Configuration

Open the Connection Assistant using the shortcut *ConnectionAssistant* in the program group *samtec Diagnostic Tools* in the Windows Start Menu.



Please check if your interface is recognized correctly and the flag *Use with PDUAPI Samtec* (1) is checked. If the flag is not set, click on the red cross to load the default settings to the *Configuration of the Samtec PDUAPI* for the connected interface.

To configure the *Samtec PDUAPI* press the *gear wheel* (2) button just below of the green check mark.

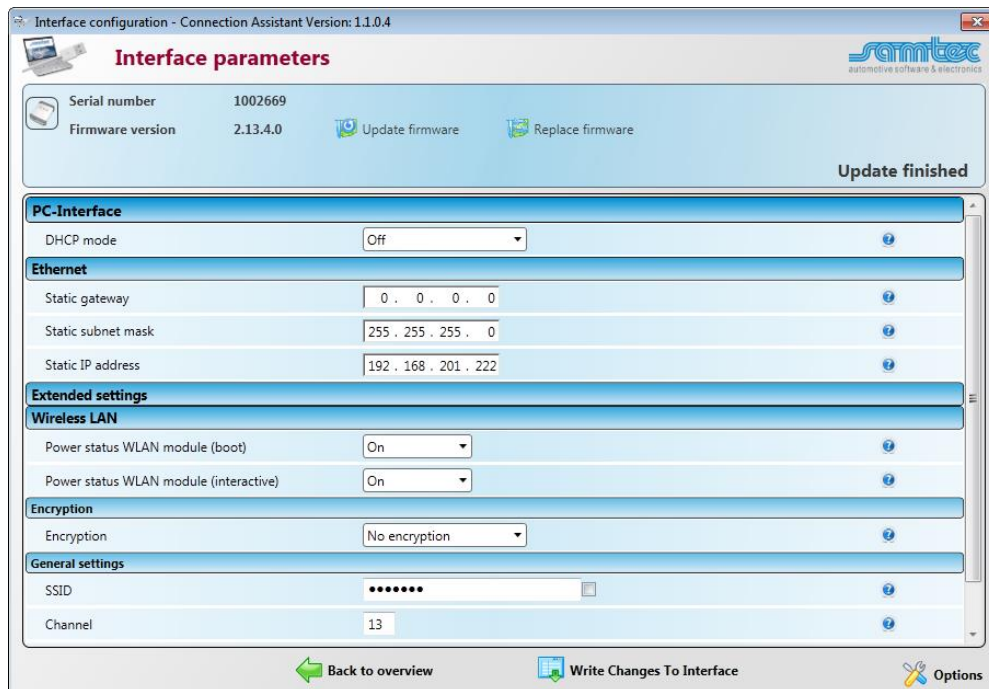


Make sure to select the correct Cable Type and press the button *Save configuration* and return to the overview by pressing the button *Back to overview*.

Select the desired VCI from the list, the user has to press the button *Configure Interface* (3) and a new window will appear with the network configurations as shown in the screen shot below.

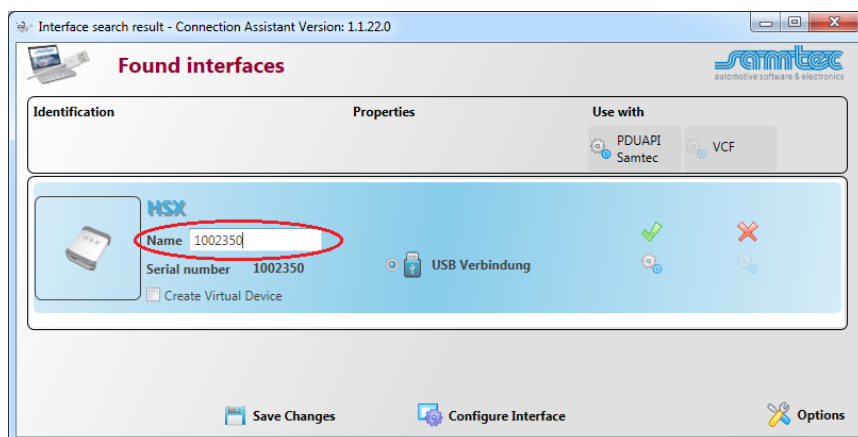
By using the latest *Samtec PDUAPI* a firmware update of the hardware is necessary.

To update the firmware press the button *Update Firmware*.



Note: It may take some time to finish the update.

As soon as the firmware update has finished press the button *Back to overview*.



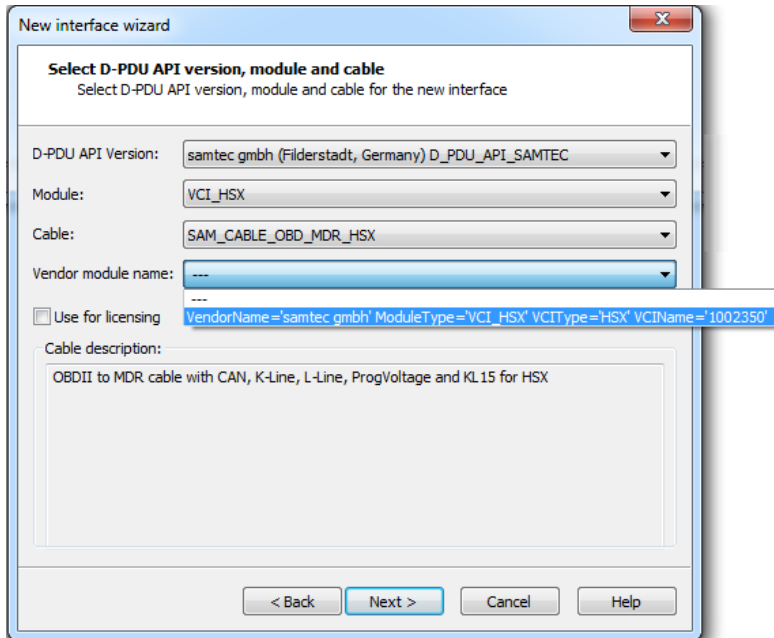
As last part enter a Name for the interface (e.g. interface serial number). This name will be used later for the SystemConfigurator (Vendor module name) and ensures the uniqueness of the interface. The unique name is required as soon as there are more than one interface are connected to the PC.

After that press the button *Save Changes*, close the application and reboot the interface.

DTS Interface Configuration

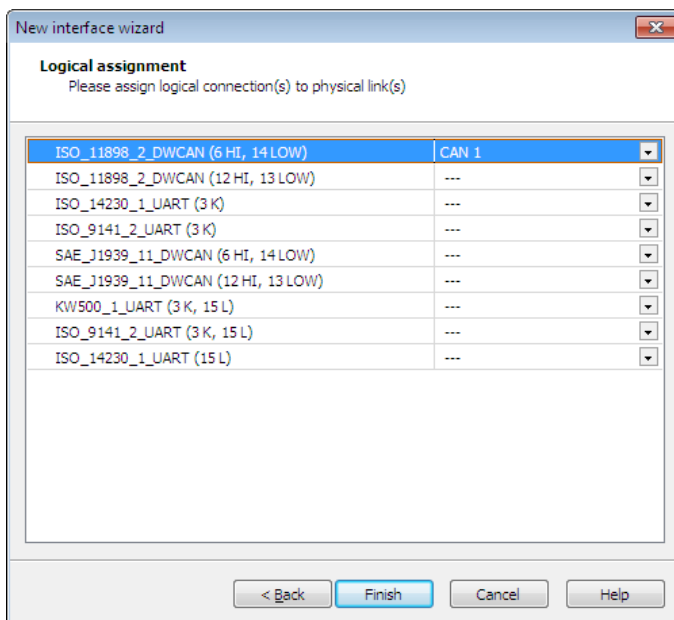
Open the DTS System Configurator. Select Interfaces in the tab System Settings.

Start the New interface wizard.



Configure the interface like in the image above.

Take care to select the cable you have set in the *SamtecPDUAPI*.



Assign the pins of the HS interface to the appropriate logical connection (see image above).

Start Monaco

Start Monaco and open the Monaco workspace of your DTS project. Check the communication to a vehicle or ECU.

Contact support.automotive@softing.com for further help.