

How To: Install an HSC Interface for DTS V8 (WLAN Infrastructure mode)

Requirements

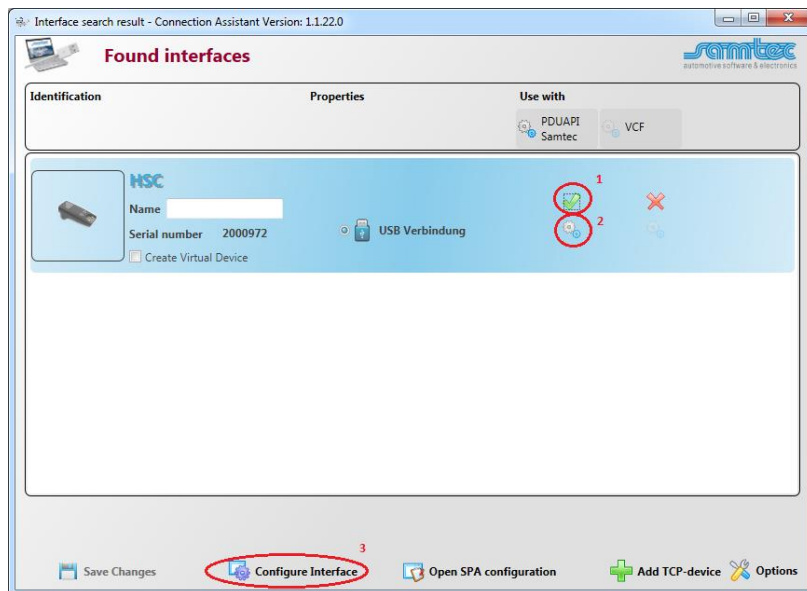
- Diagnostic Tool Set with a version of at least 8.06.021 or newer
- samtec D-PDU API setup 4.1.22.0
- HSC interface
- WLAN Connection to the used Access Point
- Administration rights for your computer

Install the Hardware Driver

Before connecting the HSC interface via USB to your computer, please install the samtec D-PDU API software from the CD. Make sure the HSC interface is not connected to your computer yet. Start the SetupSamtec_D-PDU_API_<Version>.exe installation program. You need administration rights to execute the driver installation successfully. On Windows 7 confirm any UAC (user account control) requests. After the Setup was finished, power the interface (OBD connector) and connect it to an USB port of your computer. Let Windows install the drivers for the device.

HSC Device Configuration

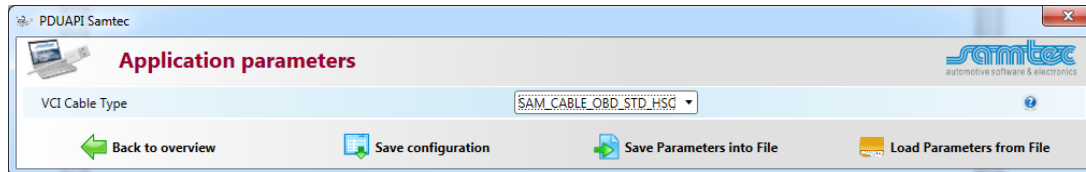
Open the Connection Assistant using the shortcut *ConnectionAssistant* in the program group *samtec Diagnostic Tools* in the Windows Start Menu to configure the HSC interface. As soon as the tool is started, it will scan for the available VCI's on network and USB connections. The following window with the found VCI's will appear:



FAQ frequently asked questions

As shown in the screen shot above, each VCI from the list will have a corresponding icon for its type (e.g. HSC, HSX), a serial number or an IP address. Based on this information the user can identify the VCI he wants to configure. Please check if your interface is recognized correctly and the flag "Use with PDUAPI Samtec" is checked (1). If the flag is not set, click on the red cross to load the default settings to the Configuration of the Samtec PDUAPI for the connected interface.

To configure the Samtec PDUAPI press the gear wheel (2) button just below of the green check mark.



Make sure to select the correct Cable Type and press the button *Save configuration* and return to the overview by pressing the button *Back to overview*.

Select the desired VCI from the list, the user has to press the button *Configure Interface* (3) and a new window will appear with the network configurations as shown in the screen shot below.

By using the latest *Samtec PDUAPI* a firmware update of the hardware is necessary. To update the firmware press the button *Update Firmware*.

Note: It may take some time to finish the update.

The Network configuration contains two parts for:

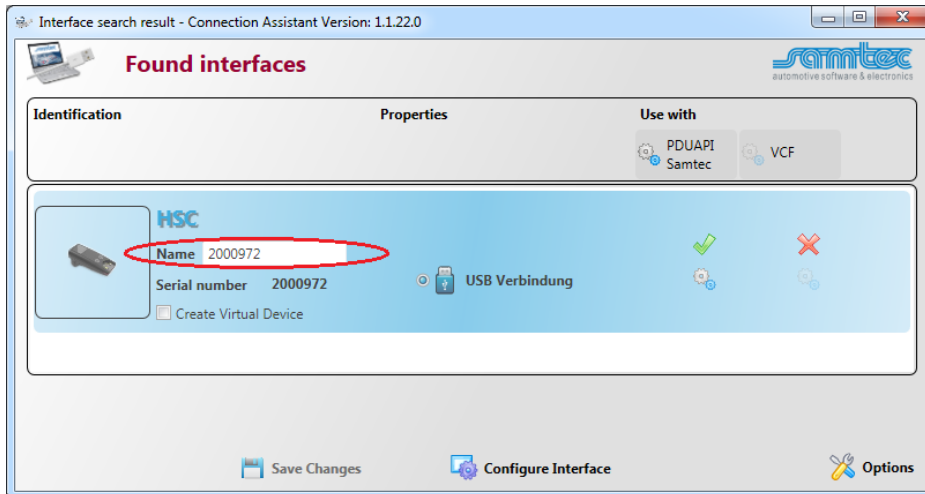
1. LAN configuration
2. WLAN configuration

FAQ frequently asked questions

Please make sure that the power state in the WLAN module is always set to “On”. The user will have to enter the Access Point WiFi name to the SSID field in “General settings”. To display the SSID enable the checkbox beside the text field. Unchecking the box again will delete the content. Each character is shown as a point instead. To use the VCI via Infrastructure Mode select the entry *Infrastructure* from the combo box *Operating mode*. Infrastructure Mode means the VCI will be part of a wireless network and the user will have to configure the VCI to be able to join the desired wireless network. In this mode it’s recommended to use dynamic IP address assignment to avoid IP address conflicts (In this example a static IP address is used).

After the configuration is finished, the user will have to press the button “*Write Changes To Interface*” to save the current configuration and press the *Back* button.

FAQ frequently asked questions



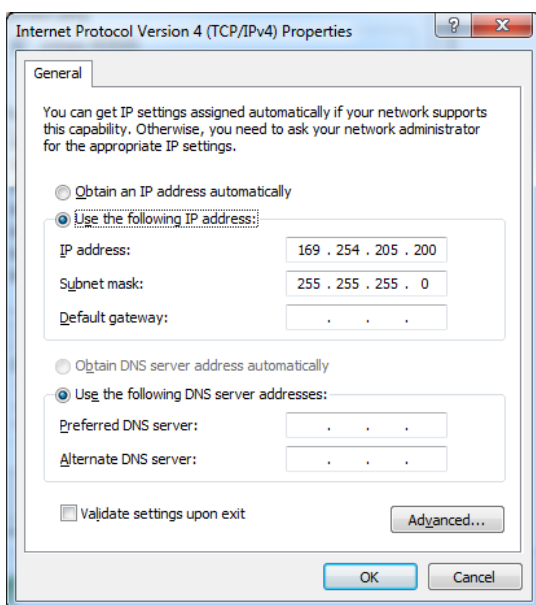
As last part enter a Name for the interface (e.g. interface serial number). This name will be used later for the SystemConfigurator (Vendor module name) and ensures the uniqueness of the interface. The unique name is required as soon as there are more than one interface are connected to the PC.

After that press the button *Save Changes*, close the application and reboot the interface.

Setup the Wireless Network Connection Properties if no DHCP-Mode is used

On Windows 7 open item *Network and Internet* in Windows Control Panel. Select *View network status and tasks*. Click *Change adapter settings* on the left side. Choose the WLAN-Connection and double click the WLAN connection icon.

Select *Internet Protocol (TCP/IP or TCP/IPv4)* and press the button "Properties".



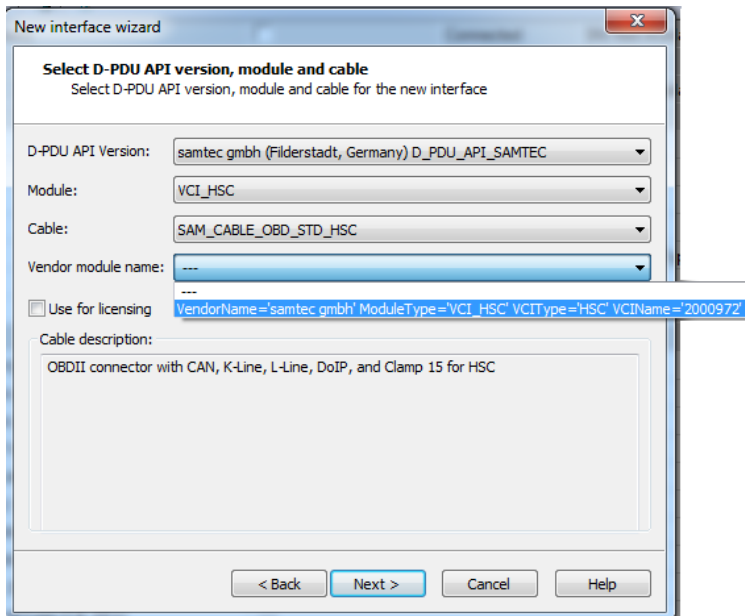
FAQ frequently asked questions

Choose “Use the following IP address” and enter the IP address 169.254.205.200 with the subnet mask 255.255.255.0 in the appropriate fields. Click OK and close the Local Area Connection Properties window.

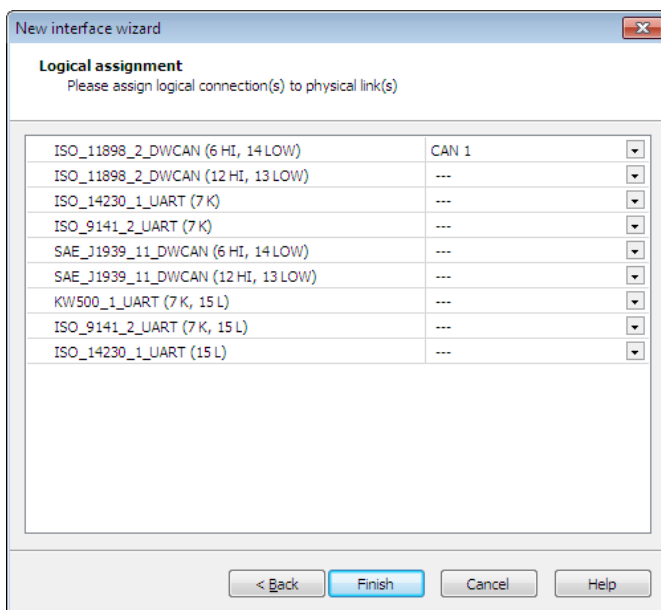
DTS Interface Configuration

Open the DTS System Configurator and select Interfaces in the tab System Settings.

Start the New interface wizard via context menu “Add interface” or select “New interface...” from the menu “System”.



Configure the interface like in the image above.



Assign the pins of the HSC interface to the appropriate logical connection (see image above).

Start Monaco

FAQ frequently asked questions

Start Monaco and open the Monaco workspace of your DTS project.

Check the communication to a vehicle or ECU.

Contact support.automotive@softing.com for further help.