

How To: Install an HSC Interface for DTS V8 (WLAN Ad-hoc mode)

Requirements

- Diagnostic Tool Set with a version of at least 8.06.021 or newer
- samtec D-PDU API setup 4.1.22.0
- HSC interface with connection cable
- Administration rights for your computer
- Windows 7

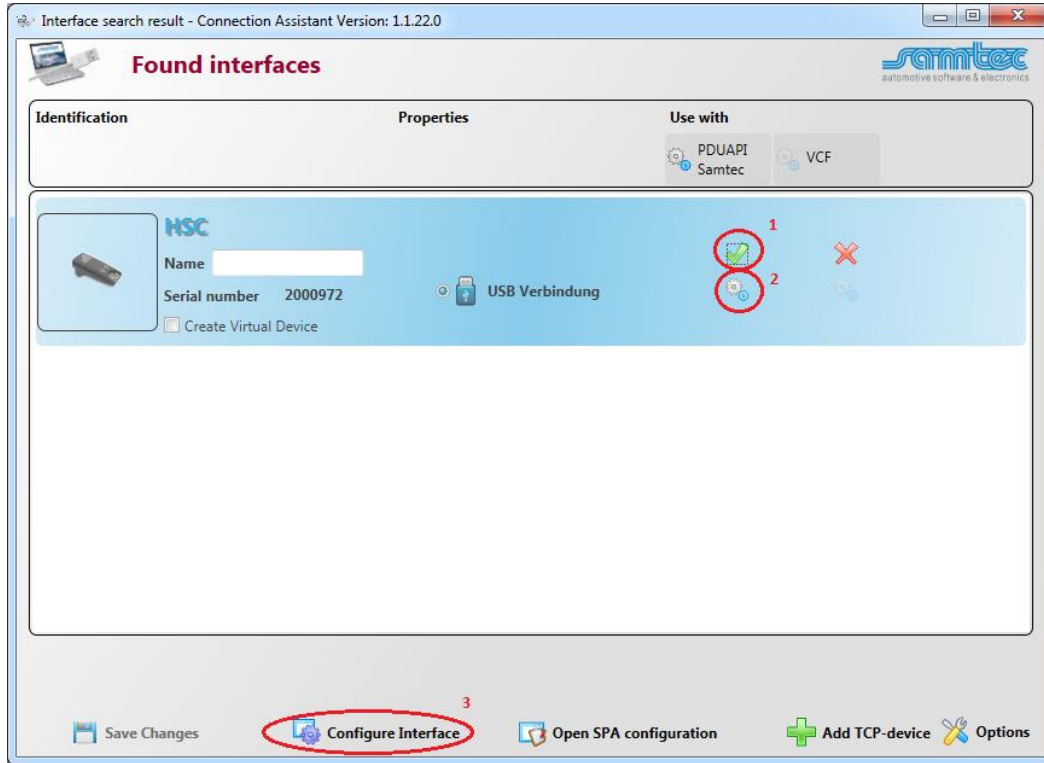
Install the Hardware Driver

Before connecting the HSC interface via USB to your computer, please install the samtec D-PDU API software from the CD. Make sure the HSC interface is not connected to your computer yet. Start the SetupSamtec_D-PDU_API_<Version>.exe installation program. You need administration rights to execute the driver installation successfully. On Windows 7 confirm any UAC (user account control) requests. After the Setup was finished, power the interface (OBD connector) and connect it to an USB port of your computer. Let Windows install the drivers for the device.

HSC Device Configuration

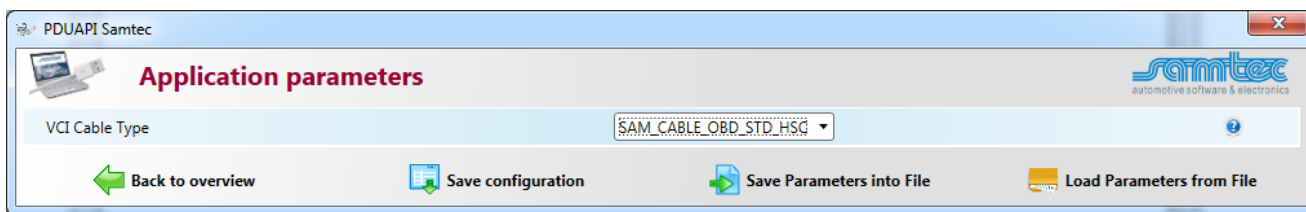
Open the Connection Assistant using the shortcut *ConnectionAssistant* in the program group *samtec Diagnostic Tools* in the Windows Start Menu to configure the HSC interface. As soon as the tool is started, it will scan for the available VCIs on network and USB connections. The following window with the found VCIs will appear:

FAQ frequently asked questions



As shown in the screen shot above, each VCI from the list will have a corresponding icon for its type (e.g. HSC, HSX), a serial number or an IP address. Based on this information the user can identify the VCI he wants to configure. Please check if your interface is recognized correctly and the flag “Use with PDUAPI Samtec” is checked (1). If the flag is not set, click on the red cross to load the default settings to the Configuration of the Samtec PDUAPI for the connected interface.

To configure the Samtec PDUAPI press the gear wheel button just below of the green check mark (2).



Make sure to select the correct Cable Type and press the button *Save configuration* and return to the overview by pressing the button *Back to overview*.

Select the desired VCI from the list, the user has to press the button *Configure Interface* (3) and a new window will appear with the network configurations as shown in the screen shot below.

By using the latest *Samtec PDUAPI* a firmware update of the hardware is necessary. To update the firmware press the button *Update Firmware*.

Note: It may take some time to finish the update.

FAQ frequently asked questions

The Network configuration contains two parts for:

1. LAN configuration
2. WLAN configuration

Interface configuration - Connection Assistant Version: 1.1.22.0

Interface parameters

Serial number: 2000972
Firmware version: 1.13.50.0 [Replace firmware](#)
[Configure access-point](#) [Configure wlan](#) [Configure ResBS file](#)

PC-Interface

TCP port number: 7500
UDP port number: 7501
DHCP mode: Off

Ethernet

Static gateway: 0 . 0 . 0 . 0
Static subnet mask: 255 . 255 . 0 . 0
Static IP address: 169 . 254 . 1 . 200
Gratuitous ARP mode: Off
MAC address: 0x50 0x2D 0xF4 0x00 0x23 0x42

Extended settings

Connection mode: Automatic negotiation
IP ToS: 0x00
IP-Forwarding: Off
Ethernet link-up action: None
Ethernet link-down action: None
Hostname:

[Back to overview](#) [Write Changes To Interface](#) [Options](#)

WLAN configuration

WLAN configuration

Wireless LAN

Power status WLAN module (boot): On

Encryption

Encryption: No encryption

General settings

SSID: HSC2000972
Operating mode: Ad-hoc mode

IP configuration

IP address: 169 . 254 . 205 . 220
Default gateway: 0 . 0 . 0 . 0
DHCP mode: Off
Subnet mask: 255 . 255 . 255 . 0

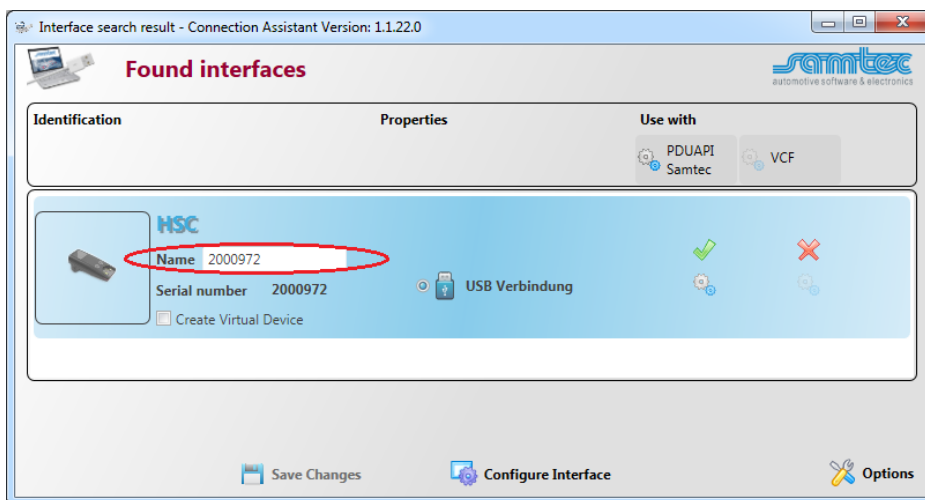
[Back to overview](#) [Save configuration](#)

FAQ frequently asked questions

Please make sure that the power state in the WLAN module is always set to “On”. It is recommended to use “no encryption”. The user will have to choose a network name for the VCI by configuring the SSID field in “General settings”. This is the name that will appear as available WiFi network. The recommended name shall contain at least the VCI type and serial number, e.g. HSC2000937. To display the SSID enable the checkbox beside the text field. Unchecking the box again will delete the content. Each character is shown as a point instead.

To use the VCI via “Ad-Hoc Mode” select the entry “Ad-hoc mode” from the combo box “Operating mode”. Ad-Hoc Mode means that the VCI will be NOT be part of a wireless network and the Tester-PC will connect directly with the VCI. This is the use case when a single user will connect with the VCI. The recommended mode is the Ad-Hoc mode with a known static IP address. Finally set DHCP to “Off” and type in IP-Address and Subnet Mask as shown in the screen shot above.

After the configuration is finished, the user will have to press the button “Write Changes To Interface” to save the current configuration.



As last part enter a Name for the interface (e.g. interface serial number). This name will be used later for the SystemConfigurator (Vendor module name) and ensures the uniqueness of the interface. The unique name is required as soon as there are more than one interface are connected to the PC.

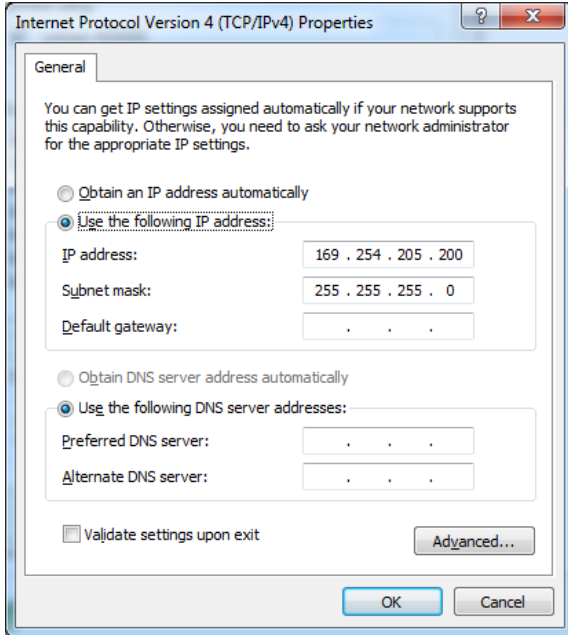
After that press the button *Save Changes*, close the application and reboot the interface.

Setup the Wireless Network Connection Properties

On Windows 7 open item *Network and Internet* in Windows Control Panel. Select *View network status and tasks*. Click *Change adapter settings* on the left side. Choose the WLAN-Connection and double click the WLAN connection icon.

FAQ frequently asked questions

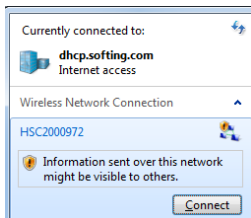
Select *Internet Protocol (TCP/IP or TCP/IPv4)* and press the button “Properties”.



Choose “*Use the following IP address*” and enter the IP address 192.168.205.200 with the subnet mask 255.255.255.0 in the appropriate fields. Click OK and close the Local Area Connection Properties window.

Connect via WLAN to the HSC interface

After the VCI reboot the Ad-Hoc WiFi connection should be available on the windows WiFi icon in the taskbar as configured with the *SamConnectionAssistant*.



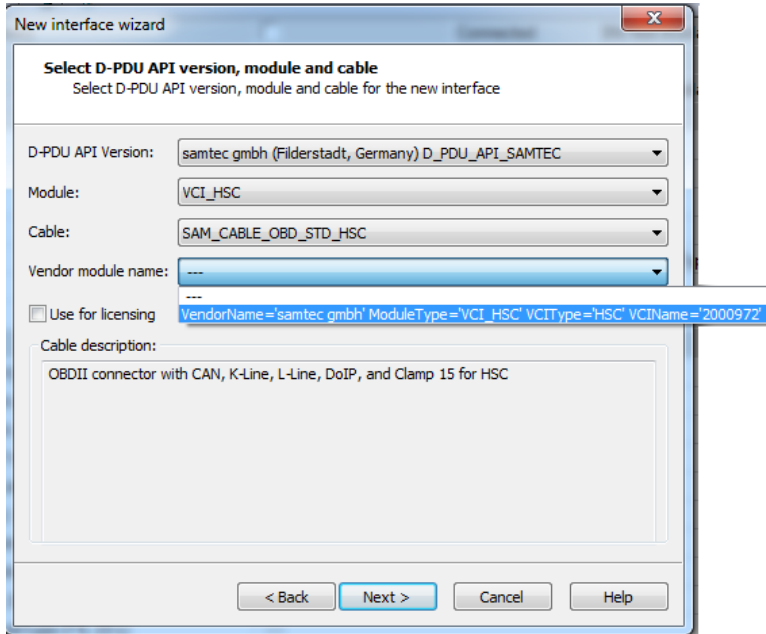
Connect to the WiFi.

DTS Interface Configuration

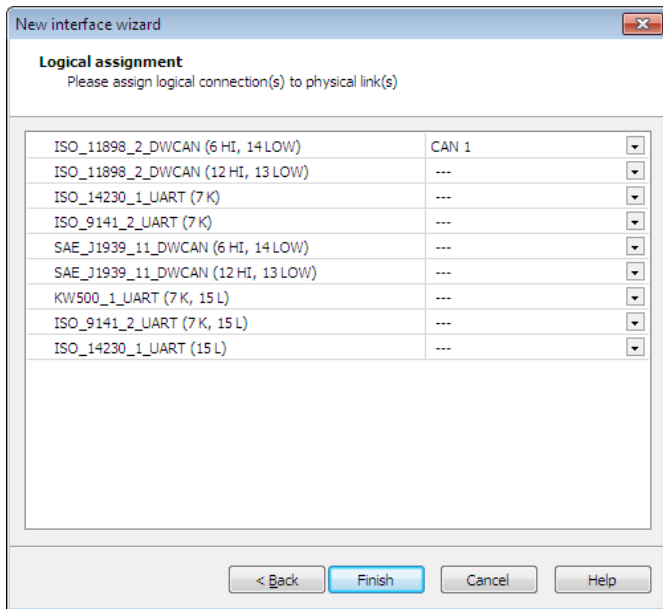
Open the DTS System Configurator and select Interfaces in the tab System Settings.

Start the New interface wizard via context menu “Add interface” or select “New interface...” from the menu “System”.

FAQ frequently asked questions



Configure the interface like in the image above.



Assign the pins of the HSC interface to the appropriate logical connection (see image above).

Start Monaco

Start Monaco and open the Monaco workspace of your DTS project.

Check the communication to a vehicle or ECU.

FAQ frequently asked questions



Contact support.automotive@softing.com for further help.