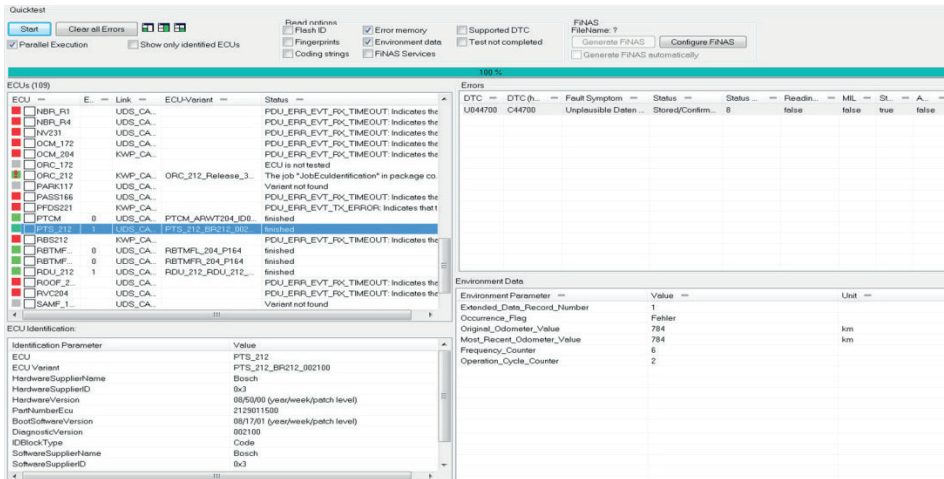


DTS 8 Daimler

Additional Information for Daimler and Suppliers

Starting from DTS 8 Monaco two basic function packages have been customized to suit the requirements of the Daimler AG. They comprise additional functions and VCI to external software tools, support for dedicated diagnostic VCI as well as specific delivery contents.



Benefits in Comparison to the Previous E-TESTER

- Multi-channel-capable: diagnoses several ECUs simultaneously
- Supports CBF, ODX 2.2, OTX, DoIP and Windows 7
- Greatly accelerated Quick Test
- Modular user interface easy to adapt to current and future requirements
- Versatile reporting
Fast results thanks to preconfigured templates

Perfectly Tailored to Existing Requirements

Two basic function packages have been agreed with the Daimler AG: On basis of the actual DTS 8 Monaco (DTS8+Monaco) the Enterprise package combines the unrestricted configuration of layouts and controls as well as the possibility to save workspaces (DTS8L-MON-CONF) with the Interface Designer (DTS8L-MIND), which enables to create/delete/rename workspace layouts as well as to create workspace templates. With regard to the vehicle diagnostics the full range of functions of the standard product (DTS8L-HMI-LIBS) is available. Moreover a special version of the OTX Studio (OTX1L+STUDIO) is included, which can be started from Monaco only and cannot be extended by standard product features. In the Expert package neither the Interface Designer nor the OTX Studio are included. Softing's VCI software is available with both packages.

Daimler specific HMI Controls

In both packages numerous additional HMI controls make DTS 8 Monaco even more powerful. Details see right.

Software Station

The Software Station requires access to the network infrastructure of the Daimler AG. Thus it is available only for users at the Daimler AG as well as for selected users at 100% subsidiaries. The functionality depends on the license: "SWT Full" provides the full range of functions, whereas "SWT Finas" only enables the Finas reverse documentation. On the basis of the Software Station and DiagCon, the ECU Management enables you to comfortably update diagnostic data finally.

Additional HMI Controls

- Complete Vehicle Coding: simple saving and restoring of the coding of a single ECU or the entire vehicle
- ECU Exchange: convenient transmission of data from one ECU to another, e.g. adaptation values
- Quick Test: Daimler users are enabled to generate additionally Finas reports
- VRX Differ: enables to compare Finas reports in detail
- SWT Vehicle Update and SWT Quick Test (both available with the Software Station only): provide special SWT functions



Supported Diagnostic VCI

VCI	Bus Systems			Data Formats	
	CAN	K-Line	DoIP	CxF 3.x	SMR (ODX 2.2.0)
eCOM	●		●	●	●
SDconnect	●	●		●	●

Technical Data

Based on DTS 8 Monaco	See data sheets Diagnostic Tool Set 8 – System Overview and DTS 8 Monaco
VCI access interface/data formats	Additionally supported: CAESAR 3.x (Daimler proprietary)/CxF
VCI software Softing	ISO 22900-2/D-PDU API compliant VCI software for selected CAN and SAE J2534/PassThru VCI as well as ISO 13400/DoIP without VCI –see data sheet D-PDU API
VCI software 3rd party	B&M D-PDU API, Actia I+ME D-PDU API and SDconnect Toolkit
Daimler „Globals“ in delivery scope	Protocols, Functional Groups, ComParam-Specs and Java Jobs (shared data)
Templates in delivery scope	Covers data/comm. test and Software Station regarding CBF+SMR, separated for passenger cars/trucks

Order Numbers for Daimler AG and 100% Subsidiaries

DTS8L+MONACO-ENT-DAG	DTS 8 Monaco Enterprise w/o SWT (MAC/VCI) incl. DTS8L-CRYPT-DAIMLER/COS/COS-SMR + PDUAPI-LIC
DTS8L+MONACO-ENT-DAG2	DTS 8 Monaco Enterprise w/o SWT (Dongle) incl. DTS8L-CRYPT-DAIMLER/COS/COS-SMR and PDUAPI-LIC
DTS8L+MONACO-EXP-DAG	DTS 8 Monaco Expert w/o SWT (MAC/VCI) incl. DTS8L-CRYPT-DAIMLER/COS/COS-SMR and PDUAPI-LIC
DTS8L+MONACO-EXP-DAG2	DTS 8 Monaco Expert w/o SWT (Dongle) incl. DTS8L-CRYPT-DAIMLER/COS/COS-SMR and PDUAPI-LIC
DTS8L+M-ENT-DAG/UG	Subsequent upgrade DTS 8 Monaco Expert -> Enterprise
DTS8L-M-SWTFINAS-DAG	Option SWT Finas for order as a package (approval of Daimler AG required)
DTS8L-M-SWTFULL-DAG	Option SWT Full for order as a package (approval of Daimler AG required)
DTS8L-M-SWTFINAS-DAG/UG	Upgrade to option SWT Finas with subsequent order (approval of Daimler AG required)
DTS8L-M-SWTFULL-DAG/UG	Upgrade from option SWT Finas -> Full with subsequent order (approval of Daimler AG required)
S-DONGLE	Micro USB license dongle, as an alternative to licensing on a VCI
Scope of MVCI Server company license	MVCI-Server (DTS8L-COS) incl. DTS8L-CRYPT-DAIMLER, DTS8L-COS-SMR

Note: The software installation package will be provided only via Daimler's Diagnostic Portal.

Order Numbers for Daimler Affiliates and Suppliers

DTS8L+MONACO-ENT-SDAG	DTS 8 Monaco Enterprise incl. micro USB license dongle, DTS8L-CRYPT-DAIMLER and PDUAPI-LIC
DTS8L+MONACO-EXP-SDAG	DTS 8 Monaco Expert incl. micro USB license dongle, DTS8L-CRYPT-DAIMLER and PDUAPI-LIC
DTS8L+M-ENT-SDAG/UG	Subsequent upgrade DTS 8 Monaco Expert -> Enterprise
DTS8L-COS	Option: Accessing the API of the ISO MVCI server with user applications – see data sheet DTS 8 COS
DTS8L-COS-SMR	Option: Generating the modular optimized runtime data format SMR – see data sheet DTS - 8 System Overview

Supplementary Products and Services

DTS8L-M-ENT-(S)DAG/MAINT	Maintenance and Support Package for the Enterprise package incl. support* by telephone and e-mail with regard to installation, setup and operation as well as minor and medium software upgrades free of charge
DTS8L-M-EXP-(S)DAG/MAINT	Maintenance and Support Package for the Expert package incl. support* by telephone and e-mail with regard to installation, setup and operation as well as minor and medium software upgrades free of charge
DTS8L-MON-UPG	Individually calculated upgrade for users without Maintenance and Support Package
DAG-ECOM-BOXED-ED	Diagnostic VCI eCOM incl. Ethernet2USB adapter and D-Sub adapter cable
DAG-ECOM-BOX-OB-D-KABEL	Optional OBD cable for eCOM diagnostic VCI
DAG-ECOM-PART-F-IP	Optional breakout box for eCOM diagnostic VCI
DTS8L-CRYPT-[OEM]	Reading and writing OEM-specific encrypted, ultra-compact runtime data – see datasheet DTS 8 System Overview
Other cross-product options	See data sheet: Diagnostic Tool Set 8 – System Overview

* For Daimler Germany and the 100% subsidiaries, the Diagnostic User Help Desk offers 1st Level Support (tel. +49 7031 90 86000/e-mail: diagnostic-support@daimler.com)